

RESIDENZA AL MOLINETTO - LUINO



massimiliano saracino architetto



massimiliano saracino architetto

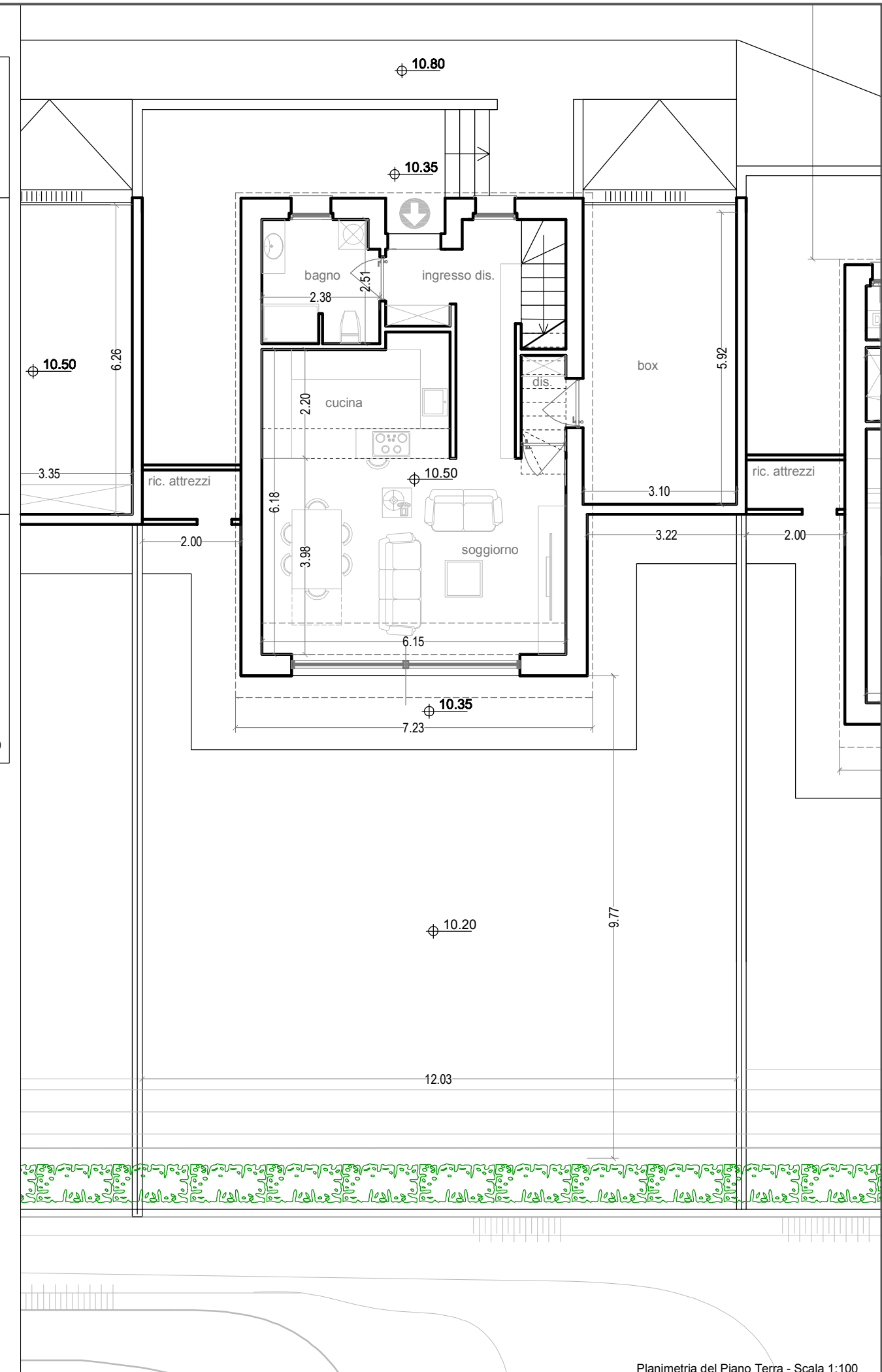
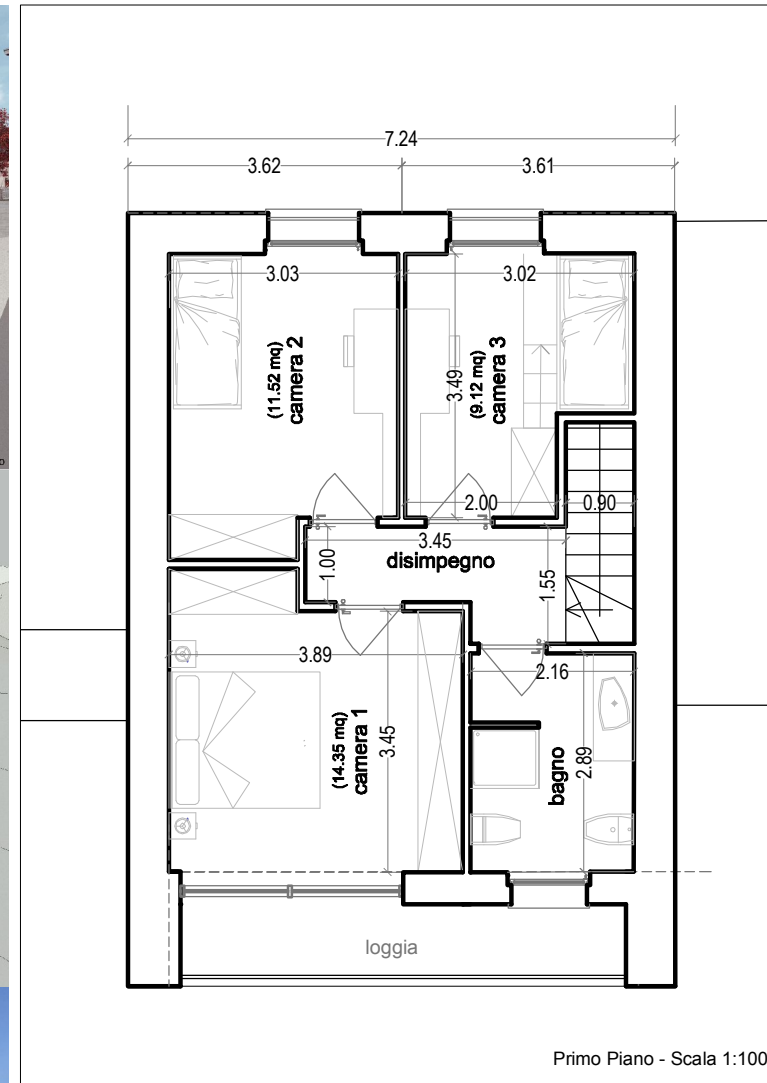


massimiliano saracino architetto



massimiliano saracino architetto

CASA B



CASA B			
	Slp (mq)	h (m)	V (mc)
			Sc (mq)
			81.38
al netto dei muri perimetrali (premio risparmio energetico)			
piano terra	54.14	3.10	167.83
prim o piano	50.24	2.70	135.65
(sup utile - comp tramezzi)	104.38		303.48